

News, Opportunities and Deadlines for May 2023

IDeA Southeast Regional Conference 2023

Event Name: IDeA South Eastern Region Conference 2023

Where: Columbia, South Carolina

When: September 15-17, 2023



Financial support may be available for LBRN PUI students or faculties to attend conferences if deemed necessary (conference presentation, paper submission).

Please contact the Program Administrator, Danielle Stanfield, for more information.

Big Data Bioinformatics & Data Science Training for LBRN students

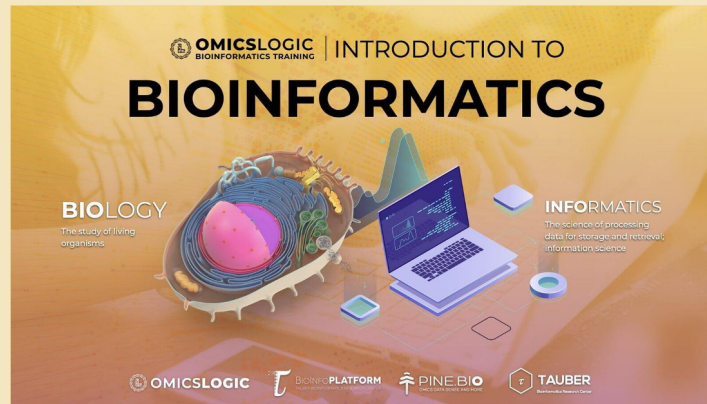
Live Orientation on June 05, 2023, at 1 PM CST

- LSU BIOMMED SUMMER PROGRAMS

While learning biotechnology, biochemistry and immunology (among other things) might be your passion, in every one of these domains analysis of experiments and clinical data is of a growing

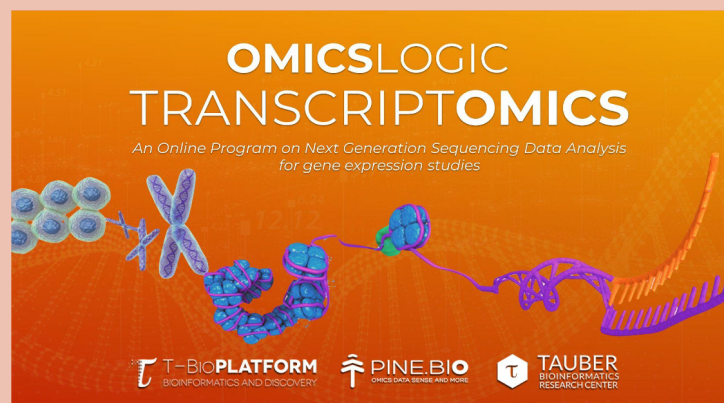
importance. While many prefer to rely on external experts to analyze their data, the understanding of basic principles behind such analysis is critical to be able to extract meaningful and reliable information that is critical for discovery. Research in life sciences is seeing an exponential growth in data volume, complexity and variability, placing bioinformatics, or data science for biological data, central to the learning path of anyone in this field.

INTRODUCTION TO BIG DATA BIOINFORMATICS



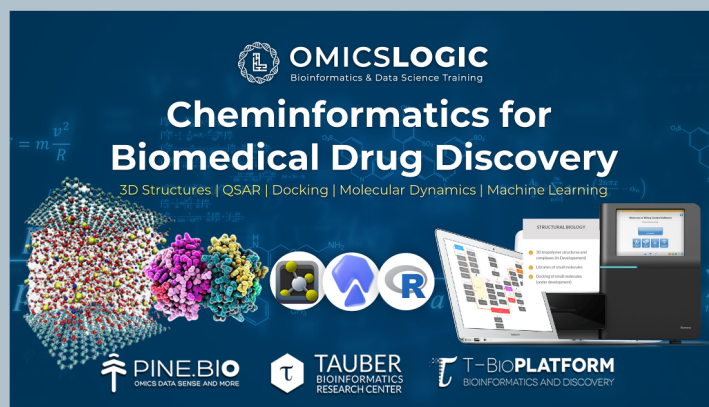
- Introduction to methods for Genomics, Metagenomics, and Transcriptomics Data Analysis.
- Beginner level

TRANSCRIPTOMICS FOR BIOMEDICAL RESEARCH



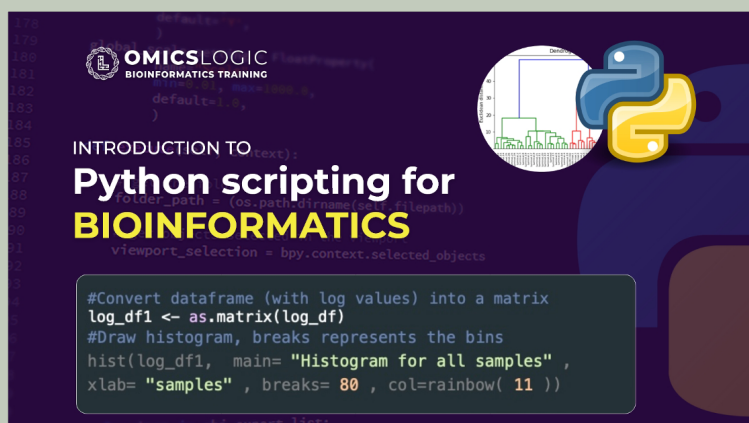
- Learn to analyze RNA-Seq data: From DGE analysis to pathway annotation, network visualization, & generating machine learning models
- Intermediate level

CHEMINFORMATICS FOR BIOMEDICAL DRUG DISCOVERY



- Learn from Industry experts and leaders about the advancements in cheminformatics and modern drug discovery pipeline
- Advanced level

BIOMEDICAL DATA SCIENCE USING PYTHON



- Learn about data science in Python, such as data wrangling, visualization, statistical analysis, & machine learning
- Advanced level

Training Registration



Webinar for NIH Research Enhancement Award (R15) Programs



Are you or other principal investigators at your institution preparing a grant application for the [NIH Research Enhancement Award \(R15\)](#)? If so, please join our upcoming webinar, “The NIH Research Enhancement Award (R15) . . . What You Need to Know!” to learn about the various NIH R15 programs, which one NIGMS participates in, and application components. You’ll also have the opportunity to ask questions:

Thursday, June 15, 2:30-3:30 p.m. ET

[Zoom registration link](#)

[Event webpage](#)

This webinar will explore how R15 programs can unlock the potential for educational institutions to conduct meritorious research, expose students to research opportunities, and strengthen the overall research environment. You can submit questions about the programs when you register for the webinar, send them [to us](#) before the webinar, or post them in the chat box during the event.

In this virtual event, participants will learn about two NIH R15 programs designed to expose students to research and strengthen the research environment of institutions that have not been major recipients of NIH support. In addition, participants will gain insights into the application process with an opportunity to participate in a live Q&A with a panel of NIH experts.

- AREA: Academic Research Enhancement Award for Undergraduate-Focused Institutions
- REAP: Research Enhancement Award Program for Health Professional and Graduate Schools

Webinar Registration



LBRN Summer Research Program

May 22 - July 28, 2023

On May 22nd, we kicked off our 2023 Summer Research Program! Program Coordinator Dr. Brent Stanfield gave a walking tour of campus for our students staying at LSU before everyone headed to their respective labs. The biomedical research that students conduct this summer will culminate in a poster presentation at LSU's Union on July 28th.



Upcoming LBRN Data & Protein Science Bootcamps



LBRN Data & Protein Science Bootcamps

DSBBBC Bootcamp

Data Science, Bioinformatic, Biocomputation and Biostatistics Core

High performance computing resources
Bioinformatics analyses
Data science

Save the Date!

July 31 ~ Aug 4, 2023

Gene cloning
Protein expression
Purification
Characterization

MCBC Bootcamp

Molecular and Cellular Biology Core

This summer, the LBRN will host boot camps organized by the Data Science, Bioinformatic, Biocomputation and Biostatistics Core (**DSBBBC**) and the Molecular and Cellular Biology Core (**MCBC**). These two boot camps will be offered back-to-back so that students and faculty can maximize their training. The DSBBBC bootcamp will focus on Data Science (high performance computing resources and bioinformatics analyses) and the MCBC bootcamp will focus on gene cloning, protein expression, purification, and characterization. The tentative dates for this are **July 31-August 4**. All expenses (travel, housing, tuition, per diem for meals, etc.) will be covered for LBRN campuses. Be on the lookout for more details and registration information in our next newsletter!

AIM-AHEAD release a new call for proposal

**Artificial Intelligence/Machine Learning Consortium
to Advance Health Equity and Researcher Diversity**

1. Consortium Development Projects to Advance Health Equity program

AIM-AHEAD anticipates releasing a new call for proposals opportunity in April 2023. The Consortium Development Projects to Advance Health Equity program seeks to fund multi-disciplinary research projects that use or develop novel AI/ML algorithms to address health disparities and inequities in alignment with the AIM-AHEAD North Stars in populations that experience health disparities in the US. Applications for this solicitation will use new or existing real-world data or synthetic data, such as electronic health records (EHR), image data, social determinants of health (SDOH), and other types of data to develop and enhance existing AI/ML algorithms that have the potential to detect and mitigate bias and reduce health disparities while improving healthcare and health outcomes. This CFP Announcement invites applications from a broad range of institutions and organizations including non-traditional industry and non-profit organizations. NIH is particularly interested in applications led by institutions and organizations that have a core mission to serve under-represented or underserved groups impacted by health disparities.

More information about this anticipated call for proposals is forthcoming.

AIM-AHEAD will update the website (<https://www.aim-ahead.net>) as the solicitations are closer to release.

Mark Your Calendar (Tentative Dates)

Solicitation release: April 2023

Application Deadline: June 2023

Funding Decisions: August 2023

Award Start Date: Sept 2023

2. Data and Infrastructure Capacity Building (DICB)

AIM-AHEAD anticipates releasing a call for proposals on Data and Infrastructure Capacity Building (DICB) in April 2023. This opportunity seeks to increase data and infrastructure capacity at minority serving institutions in Artificial Intelligence and Machine Learning (AI/ML) models and develop institutional capabilities of this emerging technology in addressing health disparities and inequities, and develop a trained workforce in these technologies. Through this program, we intend to bring new partners to the AIM-AHEAD Coordinating Center that will support and supplement the

activities of the Data and Research Core and the Infrastructure Core. In year 2 of the program, we anticipate adding 1-2 partners for the Data and Research Core, and Infrastructure Core.

More information about this anticipated call for proposals is forthcoming.

AIM-AHEAD will update the website (<https://www.aim-ahead.net>) as the solicitations are closer to release.

Mark Your Calendar (Tentative Dates)

Solicitation release: April 2023

Application Deadline: June 2023

Funding Decisions: August 2023

Award Start Date: Sept 2023

3. Program for Artificial Intelligence Readiness (PAIR)

AIM-AHEAD anticipates releasing a call for proposals on the Program for Artificial Intelligence Readiness (PAIR) in April 2023. This solicitation seeks to fund minority serving institutions with low resources to build AI/ML research capacity to advance health equity and researcher diversity. Through a two-phase funding model, PAIR will support such institutions with AIM-AHEAD resources, AI/ML experts, and grant-writing coaches to help establish AI Health Equity Research Labs that host cross-disciplinary teams to jumpstart research projects, bond with AIM-AHEAD resources, and provide the framework for the sustainability of AI research and education within these institutions.

More information about this anticipated call for proposals is forthcoming.

AIM-AHEAD will update the website (<https://www.aim-ahead.net>) as the solicitations are closer to release.

Mark Your Calendar (Tentative Dates)

Solicitation release: April 2023

Application Deadline: June 2023

Funding Decisions: August 2023

Award Start Date: Sept 2023

4. Hub-Specific Pilot Projects

AIM-AHEAD anticipates releasing a call for Hub-Specific Pilot Projects in April 2023 to cultivate new stakeholders in their regions to conduct small-scale, community-engaged research studies that align with the overall goal of AIM-AHEAD. Each hub will solicit pilot grant applications that: 1) provide new stakeholders with support to address critical issues related to their unique culture and context; 2) allow direct interaction between key stakeholder organizations, AIM-AHEAD hubs, and AIM-AHEAD technical cores; 3) provide stakeholders from underrepresented communities with capacity building opportunities; and 4) enhance local stakeholder understanding of and facility with AI/ML methods. AIM-AHEAD hubs will solicit high-quality applications that can be completed within one year through a request or call for proposal process. Hubs will conduct an internal review of applications for completeness, adherence to guidelines, and potential to advance the field of AI/ML in healthcare. Finally, these pilot projects must be aligned with the AIM-AHEAD North Stars.

More information about this anticipated call for proposals is forthcoming.

AIM-AHEAD will update the website (<https://www.aim-ahead.net>) as the solicitations are closer to release.

Mark Your Calendar (Tentative Dates)
Solicitation release: April 2023
Application Deadline: June 2023
Funding Decisions: August 2023
Award Start Date: Sept 2023

Weekly Update from DRCB / NIGMS

Updates from DRCB/NIGMS

Issue 132, 05/15/2023

NIH Funding Opportunity and/or Policy Announcements

- Supplements to IDeA Awards to Enhance Institutional Data Science Capacity ([NOT-OD-23-123](#)). Applications Due: June 19. Open to INBRE, COBRE, and IDeA-CTR awardees. See *"Upcoming Events" for Pre-application Webinar info.*
- Emergency Awards:
 - Novel Insights through Cross-Site Analyses of Existing RADx-UP Data ([RFA-OD-23-050](#)). Applications Due: July 3.
 - RADx-UP Dissemination and Implementation (D&I) Research on COVID-19 Testing Interventions among Underserved and Vulnerable Populations ([RFA-OD-23-051](#)).
- Alzheimer's-Focused Administrative Supplements for NIH Grants that are Not Focused on Alzheimer's Disease ([NOT-AG-23-015](#)). Applications Due: October 2.
- Notice of Changes to the Basic Instrumentation Grant (BIG) Program ([NOT-OD-23-118](#)).
- Maximizing Investigators Research Award (MIRA) for Early-Stage Investigators (ESI) ([PAR-23-145](#)). Applications Due: October 3.
- STrengthening Research Opportunities for NIH Grants (STRONG): Structured Institutional Needs Assessment and Action Plan Development for Resource Limited Institutions (RLIs) ([PAR-23-144](#)). Applications Due: September 18.
- **Reminder:** COBRE Phase 2 ([PAR-23-063](#)). Applications Due: May 29.

Upcoming Events

- [Business Fundamentals for Core Facility Administrators](#) course series:
 - **Session 4**—Guidance in Managing Biomedical Core Facilities: Financial Management, TODAY, May 15, 2:00-3:30pm ET. [Register Here.](#)
 - **Session 5**—Guidance in Managing Biomedical Core Facilities: Value Assessment And Contributions To The Academic Mission, Monday, June 12, 2:00-3:30pm ET. [Register Here.](#)Slides and recordings of previous sessions are available on the [website](#).
- [SuRE Resource Center](#):
 - OSP Training Webinar, "Organizing an Office of Sponsored Projects for Success," Tuesday, May 16, 2:00-3:00 PM ET. [Register Here.](#)
 - OSP Seed Grant Funding Opportunity is accepting applications thru Wed, May 17. For details, [visit this web page](#), for application guidelines, [download this PDF](#), and [visit this link to apply](#).
 - Iron Sharpening Iron: Develop Mutually Beneficial Mentor-Mentee Relationships, May 22, 3:00-4:00pm ET. [Register Here.](#)

- CTTI New Diversity Recommendations for clinical trials webinar, May 18, 12:00pm ET. [Register Here](#).
- Pre-Application Webinar for *Supplements to IDeA Awards to Enhance Institutional Data Science Capacity* ([NOT-OD-23-123](#)), May 24, 1:00pm ET. [Register Here](#).
- RADx-UP Phase IV Pre-Application Webinar, May 24, 1:30-3:00pm ET. [Register Here](#). Questions can be pre-submitted at RADxInfo@nih.gov by 11:59pm ET on Friday, May 19.
- Informational Webinar for R15 Programs, June 15, 2:30-3:30pm ET. [Register Here](#).

Issue 131, 05/08/2023

NIH Funding Opportunity and/or Policy Announcements

- Emergency Award: Novel Insights through Cross-Site Analyses of Existing RADx-UP Data ([RFA-OD-23-050](#)). Applications Due: July 3.
- Emergency Award: RADx-UP Dissemination and Implementation (D&I) Research on COVID-19 Testing Interventions among Underserved and Vulnerable Populations ([RFA-OD-23-051](#)).
- Alzheimer's-Focused Administrative Supplements for NIH Grants that are Not Focused on Alzheimer's Disease ([NOT-AG-23-015](#)). Applications Due: October 2.
- **Reminder:** Supplements to Advance the Use of Electronic Health Records for Research ([NOT-GM-23-035](#)). Applications Due: May 15. Open to CTR awardees.
- **Reminder:** COBRE Phase 2 ([PAR-23-063](#)). Applications Due: May 29.
- Notice of Changes to the Basic Instrumentation Grant (BIG) Program ([NOT-OD-23-118](#)).
- Maximizing Investigators Research Award (MIRA) for Early-Stage Investigators (ESI) ([PAR-23-145](#)). Applications Due: October 3.
- STrengthening Research Opportunities for NIH Grants (STRONG): Structured Institutional Needs Assessment and Action Plan Development for Resource Limited Institutions (RLIs) ([PAR-23-144](#)). Applications Due: September 18.

Upcoming Events

- Workshop on Innovative Approaches to Improve Maternal Health, May 8-9, 9:00am-6:00pm ET. [More Info](#) and [Register Here](#).
 - CTTI New Diversity Recommendations for clinical trials webinar, May 18 12:00 pm ET. [Register Here](#).
 - [Business Fundamentals for Core Facility Administrators](#) course series:
 - **Session 4**—Guidance in Managing Biomedical Core Facilities: Financial Management, Monday, May 15, 2:00-3:30pm ET. [Register Here](#).
 - **Session 5**—Guidance in Managing Biomedical Core Facilities: Value Assessment And Contributions To The Academic Mission, Monday, June 12, 2:00-3:30pm ET. [Register Here](#). Slides and recordings of previous sessions are available on the [website](#).
 - SuRE Resource Center:
 - OSP Training Webinar, "Organizing an Office of Sponsored Projects for Success," Tuesday, May 16, 2:00-3:00 PM ET. [Register Here](#)
 - OSP Seed Grant Funding Opportunity is accepting applications thru Wed, May 17. For details, [visit this web page](#), for application guidelines, [download this PDF](#), and [visit this link to apply](#).
 - Iron Sharpening Iron: Develop Mutually Beneficial Mentor-Mentee Relationships, May 22, 3:00-4:00pm ET. [Register Here](#).
 - RADx-UP Phase IV Pre-Application Webinar, May 24, 1:30-3:00pm ET. [Register Here](#). Questions can be pre-submitted at RADxInfo@nih.gov by 11:59pm ET on Friday, May 19.
-

Issue 130, 05/01/2023

NIH Funding Opportunity and/or Policy Announcements

- Maximizing Investigators Research Award (MIRA) for Early-Stage Investigators (ESI) ([PAR-23-145](#)). Applications Due: October 3.
- STrengthening Research Opportunities for NIH Grants (STRONG): Structured Institutional Needs Assessment and Action Plan Development for Resource Limited Institutions (RLIs) ([PAR-23-144](#)). Applications Due: September 18.
- Notice of Changes to the Basic Instrumentation Grant (BIG) Program ([NOT-OD-23-118](#)).
- Supplements to Advance the Use of Electronic Health Records for Research ([NOT-GM-23-035](#)). Applications Due: May 15. Open to CTR awardees.
- COBRE Phase 2 ([PAR-23-063](#)). Applications Due: May 29.

Upcoming Events

- Informational Webinar for "Instrumentation Grant Program for Resource-Limited Institutions" ([PAR-23-138](#)), Wednesday, May 3, 3:00-4:30pm ET. [See more information](#).
- Inclusion of People with Disabilities in Clinical Research: Accessibility by Design in Clinical Research Toolkit webinar, May 4, 11:00-12:00pm ET. [Register Here](#).
- Workshop on Innovative Approaches to Improve Maternal Health, May 8-9, 9:00am-6:00pm ET. [More Info](#) and [Register Here](#).
- [Business Fundamentals for Core Facility Administrators](#) course series:
 - **Session 4**—Guidance in Managing Biomedical Core Facilities: Financial Management, Monday, May 15, 2:00-3:30pm ET. [Register Here](#).
 - **Session 5**—Guidance in Managing Biomedical Core Facilities: Value Assessment And Contributions To The Academic Mission, Monday, June 12, 2:00-3:30pm ET. [Register Here](#).Slides and recordings of previous sessions are available on the [website](#).
- SuRE Resource Center:
 - OSP Training Webinar, "Organizing an Office of Sponsored Projects for Success," Tuesday, May 16, 2:00-3:00 PM ET. [Register Here](#)
 - OSP Seed Grant Funding Opportunity is accepting applications thru Wed, May 17. For details, [visit this web page](#), for application guidelines, [download this PDF](#), and [visit this link to apply](#).

Issue 129, 04/24/2023

NIH Funding Opportunity and/or Policy Announcements

- Supplements to Advance the Use of Electronic Health Records for Research ([NOT-GM-23-035](#)). Applications Due: May 15. Open to CTR awardees.

Upcoming Events

- SuRE Resource Center:
 - OSP Seed Grant Informational Webinar, Wednesday, April 26, 3:00-4:00 PM ET. [Register Here](#).
 - NIH Pre-Award Process, Thursday, April 27, 3:00-4:30 PM EST. [Register Here](#)
 - OSP Training Webinar, "Organizing an Office of Sponsored Projects for Success," Tuesday, May 16, 2:00-3:00 PM ET. [Register Here](#)
 - OSP Seed Grant Funding Opportunity is accepting applications thru Wed, May 17. For details, [visit this web page](#), for application guidelines, [download this PDF](#), and [visit this link to apply](#).
- [Business Fundamentals for Core Facility Administrators](#) course series:

- **Session 4**—Guidance in Managing Biomedical Core Facilities: Financial Management, Monday, May 15, 2:00-3:30pm ET. [Register Here](#).
 - **Session 5**—Guidance in Managing Biomedical Core Facilities: Value Assessment And Contributions To The Academic Mission, Monday, June 12, 2:00-3:30pm ET. [Register Here](#).
- Slides and recordings of previous sessions are available on the [website](#).
- Inclusion of People with Disabilities in Clinical Research: Accessibility by Design in Clinical Research Toolkit webinar, May 4, 11:00-12:00pm ET. [Register Here](#).

NIH Extramural Nexus

• Update on Simplifying Review Criteria: Analysis of Comments from the Request for Information

As discussed in the blog, "[Update on Simplifying Review Criteria: A Request for Information](#) (RFI)," NIH issued an RFI—from December 8, 2022, through March 10, 2023—seeking feedback on its proposed plan to revise and simplify the framework for the first level of the peer review of research project grant (RPG) applications.

NIH received more than 800 [responses](#) to the RFI: 780 from individuals, 30 from scientific societies, and 30 from academic institutions. The vast majority were supportive of the proposed changes, although a minority were in favor of Factor 3 (Investigator, Environment) being scored, and a smaller minority advocated for a blinded or partially blinded review process. Most of the respondents highlighted the need for strong training resources for reviewers, study sections chairs, and scientific review officers.

One question that often arises is how investigator and institution will be weighted in arriving at the Overall Impact score, if they themselves are not individually scored. Since 2009, when scoring was added to the review criteria, reviewers have been free to weight these as they see fit in the Overall Impact score. This score has never been an average of criterion scores. This is no different in the setting of the simplified framework.

[... continue to read](#)

• Reminder – NIH Policies for NRSA Stipends, Compensation, and Other Income

NIH provides stipends to NRSA fellows and trainees as a subsistence allowance to help defray living expenses during the research training experience. NIH does not provide stipends as a condition of employment with either the Federal government or the sponsoring institution. While stipends are not provided as a condition of employment, this policy is not intended to discourage or otherwise prevent recipient institutions from hiring NRSA trainees and fellows as employees or providing them with benefits consistent with what the institution provides others at similar career stages.

For more information, see the full [Guide Notice](#). Please direct all inquiries to NIHTrain@mail.nih.gov.

• Resources to Aid Your Journey on xTrain

Several resources are on hand for xTrain users to navigate the redesigned xTrain module that was launched March 30. [xTrain](#) allows program directors/principal investigators, university administrators, and trainees to electronically prepare and manage appointments and terminations for trainees and fellows.

- [xTrain online help](#) — For step-by-step instructions and screenshots
- [xTrain videos](#) — Tutorials that walk you through an overview of xTrain and how to initiate and manage appointments and terminations of trainees
- [xTrain quick reference guides](#) — Guides by user role for principal investigators, trainees, and institution users
- [xTrain presentation](#) — An overview of xTrain, highlighting key screens and information
- NIH Guide Notice [NOT-OD-23-094](#) — An official notice about the redesign with information on a process change for deletion of forms as well as clarifications on signatures for trainees and organizational responsibilities for users

• Check Out These Public Federal Funding Databases to Learn More About Funding at NIH and Other Federal Agencies

We often recommend NIH RePORT ([Research Portfolio Online Reporting Tools](#)) site to applicants & awardees because it publicly provides reports, data, and analyses of NIH research activities, including information on NIH expenditures and the results of NIH-supported research. The RePORT suite includes:

- NIH RePORTER ([RePORT Expenditures and Results](#)) allows users to search for funded projects, investigators, publications, and patents (see [this NIH Open Mike blog](#) for more). REPORTER also [includes](#) information on research projects funded by the Centers for Disease Control and Prevention, Food and Drug Administration, Agency for Healthcare Research and Quality, Health Resources and Services Administration, Administration for Children and Families, and U.S. Department of Veterans Affairs.
- [Awards by Location and Organization](#) provides year-by-year NIH funding data, filterable by institution, state, congressional district, and more.
- RCDC ([Research, Condition, and Disease Categorization](#)) shows actuals and future estimates of annual support level for various budget categories based on grants, research and development contracts, and other funding mechanisms used by NIH, as well as disease burden data published by the CDC National Center for Health Statistics. See [this NIH Open Mike blog](#) for more.
- [NIH Data Book](#) gives a wealth of summary statistics on extramural grants and research and development contract awards, including the organizations and researchers that NIH supports as well as application success rates See [this NIH Open Mike blog](#) for more.

[... continue to read](#)

- **Tool Tip: Identify NIH Funded Researchers at Your Institution and Beyond with RePORTER**

Would you benefit from feedback on your NIH grant application? Or are you seeking advice on NIH funding and how it can support your career progression? Sometimes help is closer than you think! It can be very helpful to tap NIH-funded researchers at your own institution to provide feedback on your application or to serve as mentors. [NIH RePORTER](#) is a super easy way to identify NIH-funded investigators at your institution (or elsewhere) who may be willing to help.

RePORTER is an electronic tool that allows users to search a database of NIH-funded research projects and access publications and patents resulting from NIH funding. This means you can find funded researchers at your institution through a simple search of your organization name or using the Organization filter in the Advanced Search. You could also use it to find potential NIH funded collaborators in your field.

Enter just about anything in the RePORTER Quick Search box, text, PI names, project numbers, fiscal year, agency, whatever criteria you want to explore NIH's database of funded research.

LBRN Cores Support Form

LBRN Bioinformatics, Biostatistics, and Computational Biology Core (BBCC) and Molecular and Cell Biology Resources Core (MCBRC) remind you that they are available for questions and contact via our LBRN Cores website. If you're not sure who to reach out to, you can ask via our website [Cores Contact form](#) and we will get back to you with the appropriate resource to do the best we can to answer your question. Look for the "Cores Contact" on the Cores page.

Louisiana Biomedical Research Network

About Cores Research Training & Education Resources Events

LBRN Cores

BBC

The Bioinformatics, Biostatistics, and Computational Biology Core (BBC) of the Louisiana Biomedical Research Network (LBRN) serves to train and support project investigators and their teams across Louisiana, and to lead and support translational research activities at the frontiers of biomedical science. Its team uses both established and custom computational tools, operating at computational scales ranging from the mundane to analyses engaging many hundreds of compute cores.

MCBRC

Molecular and Cell Biology Resources Core (MCBRC) provides an essential linkage among important basic fields of biomedical science, such as genetics, developmental biology, structural biology, immunology, neurobiology, and cancer biology. The MCBRC takes advantage of existing highly organized, centralized services and equipment facilities located primarily at the LSU flagship institution in Baton Rouge, effectively uniting these units toward the common goal of supporting biomedical research performed by PUI investigators. The MCBRC will provide technical and logistical support, enabling the ready exchange of information, ideas, technology, and research capabilities among PUI investigators. MCBRC will ensure that PUI researchers have full access to state-of-the-art equipment and modern research techniques and services.

Cores Training & Support

The cores provide one on one training. If you have a question or would like to talk about your training needs, you would like more information about services provided by the cores, or you would like to talk to someone in the core about how someone can assist you, please use Cores Contact link:

[Cores Contact](#)

LBRN Cores Contact Form

Resize font:
[icon] [icon]

Please complete the questions below.

Thank you!

Your Name <small>* must provide value</small>	<input type="text"/>
Your Email <small>* must provide value</small>	<input type="text"/>
Your Institution <small>* must provide value</small>	<input type="text"/>
Indicate which core(s) that best fits / you'd like to contact: <small>* must provide value</small>	<div><input type="checkbox"/> Administrative Core <input type="checkbox"/> Bioinformatics, Biostatistics, and Computational Core <input type="checkbox"/> Molecular and Cell Biology Resources Core <input type="checkbox"/> Other/Not Sure</div> <p>select all that apply</p>
Please describe what you would like to ask and the question will get routed to the appropriate person in the core or the administrative core will contact you to try to help who is the appropriate person to contact you. <small>* must provide value</small>	<div><input type="text"/></div> <p>Expand</p>
<input type="submit" value="Submit"/>	

LONI HPC Allocation for LBRN



To support the LBRN / BBC Core community on LONI HPC systems, we have renewed our high-performance computing allocation for 2022 / 2023.

This can be utilized in lieu of individual investigators having to apply for and acquire their own allocations to access the HPC resources. If any of your campus members need access to high performance computing, please have them interface with [Dr. Nayong Kim](#).

LBRN "Core Bucks"



The BBC Core and MCBR Core offer researchers the opportunity to earn "Core Bucks" to support faculty and students upto \$1500. Requests for Core Bucks from Member Institutions must be initiated through the respective Core Contact on campus.



- The Bioinformatics, Biostatistics, and Computational Biology Core (BBC Core)

The BBC Core serves to train and support project investigators and their teams across Louisiana. It works to enable Louisiana Biomedical Research Network project PIs and their teams to employ Louisiana cyberinfrastructure (especially high performance computing), and to provide bioinformatics services, training, and educational support.

The core provides bioinformatics training, conducts workshops, and provides bioinformatics analysis services. The core also provides access to the IBM Delta Cluster and has a dedicated BBC allocation for the high performance computing resources at LSU. The BBC Core maintains software licenses and access to Ingenuity Pathway Analysis (IPA), Partek Flow, DNASTAR, and Ion Torrent analysis software. In addition, several open source tools for bioinformatics such as bowtie, tophat, cufflinks, samtools, GATK, QIIME, DADA2, Phyloseq, etc. are installed and maintained.

Some examples of standard bioinformatics workflows that can be supported through core bucks requests:

- Gene Pathway Analysis
- RNA-Sequencing Processing and Analysis
- 16S rRNA Microbial Community Analysis
- ITS2 Fungal Community Analysis

Other workflows can be developed or adapted from existing software on an as needed basis.

For more information, see: <https://lbrn.lsu.edu/cores.html#corebucks>



- The Molecular and Cell Biology Resources Core (MCBR Core)

MCBR Core Services include both one-on-one training for faculty and students as well as workshops on topics like bioinformatics and protein purification.

Sample services:

1. Molecular Biology Reagent Equipment and Services

- GeneLab provides conventional and next generation nucleic acid sequencing (NGS), and recombinant DNA Service. NGS equipment includes Torrent PGM, Ion Proton etc
- NGS Services provides a reliable connection between NGS experiments and the analysis of NGS data

2. Protein Production, Purification and Characterization Laboratory

- Protein Purification and Characterization includes semi automated Bio-rad proflin affinity chromatography system, AKTA Explorer FPLC system, and HPLC and ultracentrifugation equipment
- Peptide Synthesis and purification
- Protein-protein interactions are investigated using primarily Surface Plasmon Resonance (SPR) implemented on Biacore and ForteBio SPR equipment. Additional physicochemical characterization of protein-protein interactions is available through collaborations with the LSU Department of Chemistry.
- Gene-to-Protein-to-Antibody Services – you provide the gene, we return an antibody

3. Molecular Immunopathology Laboratory Services

- Pathology Services including necropsy procedures, gross and histopathological examinations and interpretation of immunohistochemistry and special stains performed by veterinarians and histology specialists
- Flow Cytometry and immunophenotyping Services
- Multiplex/Luminex complements immunophenotyping services for rapid and standardized analysis of soluble factors e.g., lymphokines, using bead based array technology.
- Microscopy – contains transmission and scanning electron microscopes, a laser dissection microscope, a Leica TCS SP2 for 3D fluorescence microscope, and a high-throughput digital slide-scanner.

For more information, see: <https://lbrn.lsu.edu/cores.html#corebucks>

NIH LBRN Acknowledgement

So that we can most effectively communicate the scope and results of our funding support, we would like to know when you are planning news announcements about IDeA awards or program activities and achievements...

When you produce such material, please be sure to identify the IDeA program, not just the INBRE, COBRE or sub-program, and to provide context about the program's goals along the lines of:

The University of _____ has received \$XXX from the National Institutes of Health (NIH) to support an Institutional Development Award (IDeA) Center of Biomedical Research Excellence. The IDeA program builds research capacities in states that historically have had low levels of NIH

funding by supporting basic, clinical and translational research; faculty development; and infrastructure improvements.

In journal articles, news releases, or other materials about your program's activities or achievements, please use funding acknowledgement language such as:

Research reported in this {publication, release} was supported by an Institutional Development Award (IDeA) from the National Institute of General Medical Sciences of the National Institutes of Health under grant number 5 P20 GM103424-21.

- In journal articles, oral or poster presentations, news releases, news and feature articles, interviews with reporters and other communications, acknowledge the IDeA program's full or partial support of the research. The citation in scientific publications should use the following format:

Research reported in this publication was supported by an Institutional Development Award (IDeA) from the National Institute of General Medical Sciences of the National Institutes of Health under grant number P20GM103424-21.

- If you wish to acknowledge NIH/NIGMS funding on your Web site or other communication product, you may use wording such as:

Funded by an Institutional Development Award (IDeA) from the National Institutes of Health.

or

Funded by the LBRN (2P20GM103424-21) an Institutional Development Award (IDeA) from the National Institute of General Medical Sciences of the National Institutes of Health.

Please do not use the NIH or NIGMS logo to acknowledge funding, as these logos are only to be used for material produced by NIH and its components.



Copyright © LBRN

Want to change how you receive these emails?
You can [update your preferences](#) or [unsubscribe from this list](#).

This email was sent to nkim@lsu.edu
[why did I get this?](#) [unsubscribe from this list](#) [update subscription preferences](#)
LSU · Louisiana State University · 2017 Digital Media Center · Baton Rouge, La 70803 · USA

